

State of Wyoming Corner Record

(In compliance with the *CORNER PERPETUATION AND FILING ACT*, Wyoming Statutes, 1997 Section 33-29-140 et. seq., and the Rules and Regulations of the Board of Professional Engineers and Professional Land Surveyors)

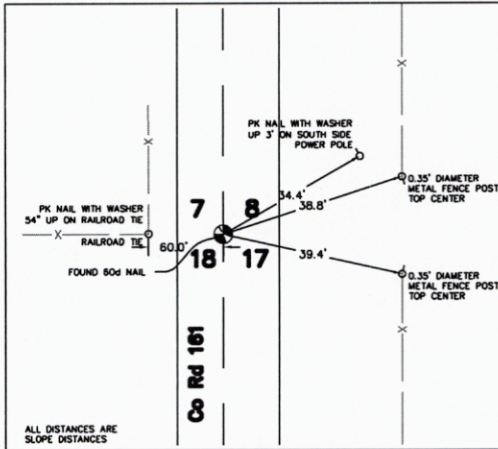
Reverse side of this form may be used if more space is needed.

Record of original survey and citation of source of historical information (if corner is lost or obliterated). Description of corner monumentation evidence found and/or monument and accessories established to perpetuate the location of this corner. Sketch of relative location of monument, accessories, and reference points with course and distance to adjacent corner(s) (if determined in this survey). Method and rationale for reestablishment of lost or obliterated corner.

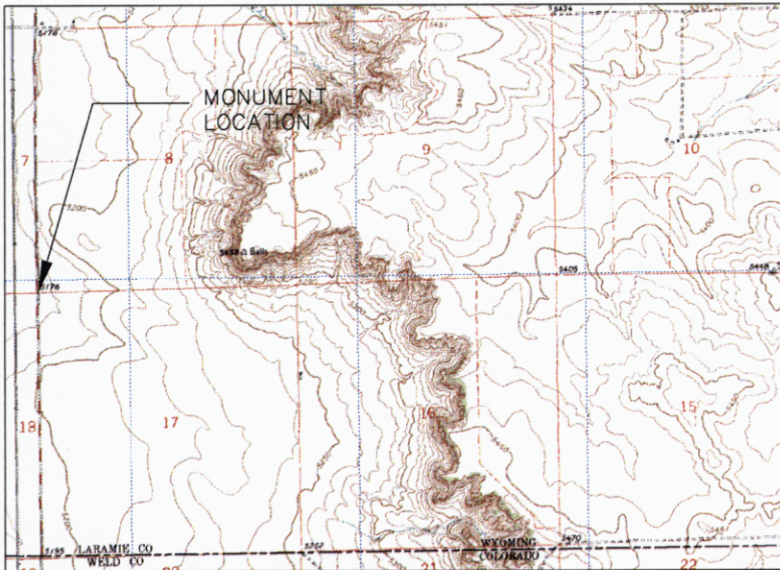
FOUND: FOUND 60d NAIL NEAR SW CORNER OF SECTION 8 AT CENTERLINE OF COUNTY ROAD 161-ACCEPTED AS PERPETUATING THE ORIGINAL CORNER LOCATION.

SET: 2" BRASS WASHER ON 60d NAIL INSCRIBED AS SHOWN BELOW-TIES TO MONUMENT AS SHOWN BELOW

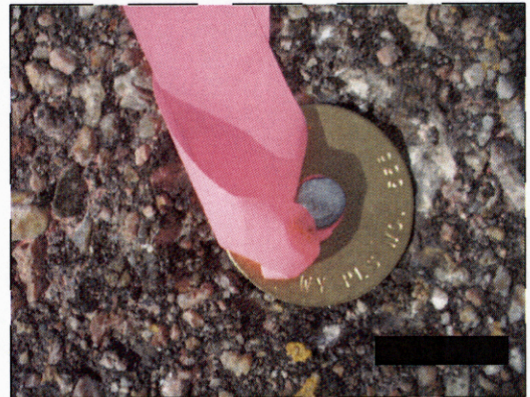
- NOTE:**
- 1) THIS CORNER RECORDATION FORM IS BEING FILED TO CORRECT THE CORNER RECORDATION FORM SIGNED 8-30-07. THE SUBJECT MONUMENT HAS BEEN ACCEPTED AS PERPETUATING THE ORIGINAL CORNER LOCATION.
 - 2) THE CORNER HAS SINCE BEEN MONUMENTED AS SHOWN TO DOCUMENT THE PERPETUATED POSITION.
 - 3) FOR ADDITIONAL INFORMATION ON THIS CORNER SEE MAP OF SURVEY FOR T12N R60W AND A PORTION OF T13N R60W ON FILE AT THE LARAMIE COUNTY CLERK'S OFFICE IN SURVEY CABINET 4 MAP 29 AND BOOK 2149 PAGE 59
 - 4) SEE ATTACHED PHOTOS FOR ADDITIONAL DETAILS



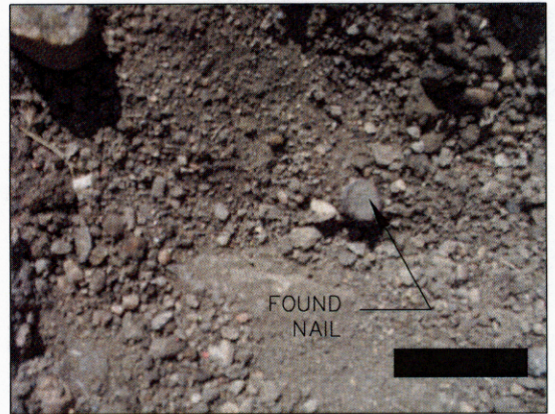
Monument Ties



Monument location



Set Washer



Monument Found Nail

Date of Field Work: 5/24/2007

Office Reference: 2655

Cross Index Plat

Firm/Agency, Address

This corner record was prepared by me or under my direction and supervision.

AVI P.C.
2035 WESTLAND RD.
CHEYENNE, WY. 82001

SEAL & SIGNATURE

Telephone Number: 307-637-6017

1	2	3	4	5	6	7	8	9	10	11	12	13	14	15	16	17	18	19	20	21	22	23	24	25		
A	+	+	+	+	+	+	+	+	+	+	+	+	+	+	+	+	+	+	+	+	+	+	+	+	A	
B	+	6	+	5	+	+	4	+	3	+	2	+	1	+	+	+	+	+	+	+	+	+	+	+	B	
C	+	+	+	+	+	+	+	+	+	+	+	+	+	+	+	+	+	+	+	+	+	+	+	+	C	
D	+	+	+	+	+	+	+	+	+	+	+	+	+	+	+	+	+	+	+	+	+	+	+	+	D	
E	+	+	+	+	+	+	+	+	+	+	+	+	+	+	+	+	+	+	+	+	+	+	+	+	E	
F	+	+	+	+	+	+	+	+	+	+	+	+	+	+	+	+	+	+	+	+	+	+	+	+	F	
G	+	7	+	8	+	9	+	10	+	11	+	12	+	+	+	+	+	+	+	+	+	+	+	+	G	
H	+	+	+	+	+	+	+	+	+	+	+	+	+	+	+	+	+	+	+	+	+	+	+	+	H	
J	+	+	+	+	+	+	+	+	+	+	+	+	+	+	+	+	+	+	+	+	+	+	+	+	J	
K	+	+	+	+	+	+	+	+	+	+	+	+	+	+	+	+	+	+	+	+	+	+	+	+	K	
L	+	18	+	17	+	16	+	15	+	14	+	13	+	+	+	+	+	+	+	+	+	+	+	+	L	
M	+	+	+	+	+	+	+	+	+	+	+	+	+	+	+	+	+	+	+	+	+	+	+	+	M	
N	+	+	+	+	+	+	+	+	+	+	+	+	+	+	+	+	+	+	+	+	+	+	+	+	N	
O	+	+	+	+	+	+	+	+	+	+	+	+	+	+	+	+	+	+	+	+	+	+	+	+	O	
P	+	19	+	20	+	21	+	22	+	23	+	24	+	+	+	+	+	+	+	+	+	+	+	+	P	
Q	+	+	+	+	+	+	+	+	+	+	+	+	+	+	+	+	+	+	+	+	+	+	+	+	Q	
R	+	+	+	+	+	+	+	+	+	+	+	+	+	+	+	+	+	+	+	+	+	+	+	+	R	
S	+	+	+	+	+	+	+	+	+	+	+	+	+	+	+	+	+	+	+	+	+	+	+	+	S	
T	+	30	+	29	+	28	+	27	+	26	+	25	+	+	+	+	+	+	+	+	+	+	+	+	T	
U	+	+	+	+	+	+	+	+	+	+	+	+	+	+	+	+	+	+	+	+	+	+	+	+	U	
V	+	+	+	+	+	+	+	+	+	+	+	+	+	+	+	+	+	+	+	+	+	+	+	+	V	
W	+	+	+	+	+	+	+	+	+	+	+	+	+	+	+	+	+	+	+	+	+	+	+	+	W	
X	+	31	+	32	+	33	+	34	+	35	+	36	+	+	+	+	+	+	+	+	+	+	+	+	X	
Y	+	+	+	+	+	+	+	+	+	+	+	+	+	+	+	+	+	+	+	+	+	+	+	+	Y	
Z	1	2	3	4	5	6	7	8	9	10	11	12	13	14	15	16	17	18	19	20	21	22	23	24	25	Z



Corner Name SW Corner Section 8, T 12 N, R 60 W, 6th P.M.
County: LARAMIE Wyoming
SBRPEPLS/PLSW: March 1994; PLSW January 1998

Cross-Index No.: J-5

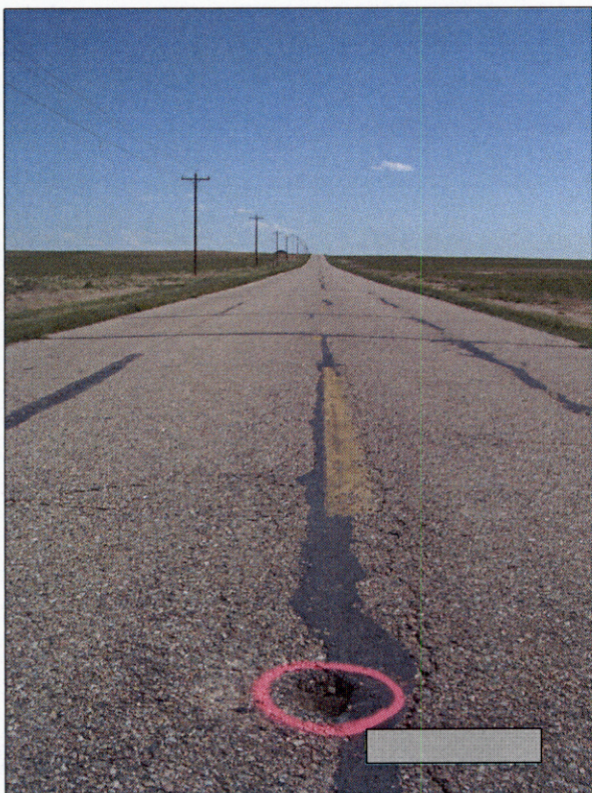
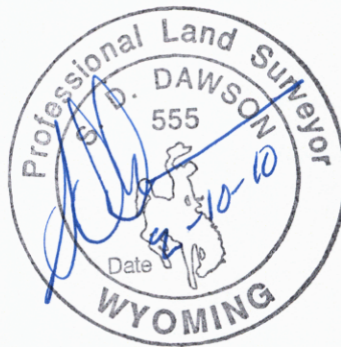
RECORDED 2/10/2010 AT 2:17 PM REC# 538987 BK# 2150 PG# 1266
 DEBRA K. LATHROP, CLERK OF LARAMIE COUNTY, WY PAGE 1 OF 2



View North



View East



View South



View West

Corner Name SW Corner Section 8, T 12 N, R 60 W, 6th P.M.